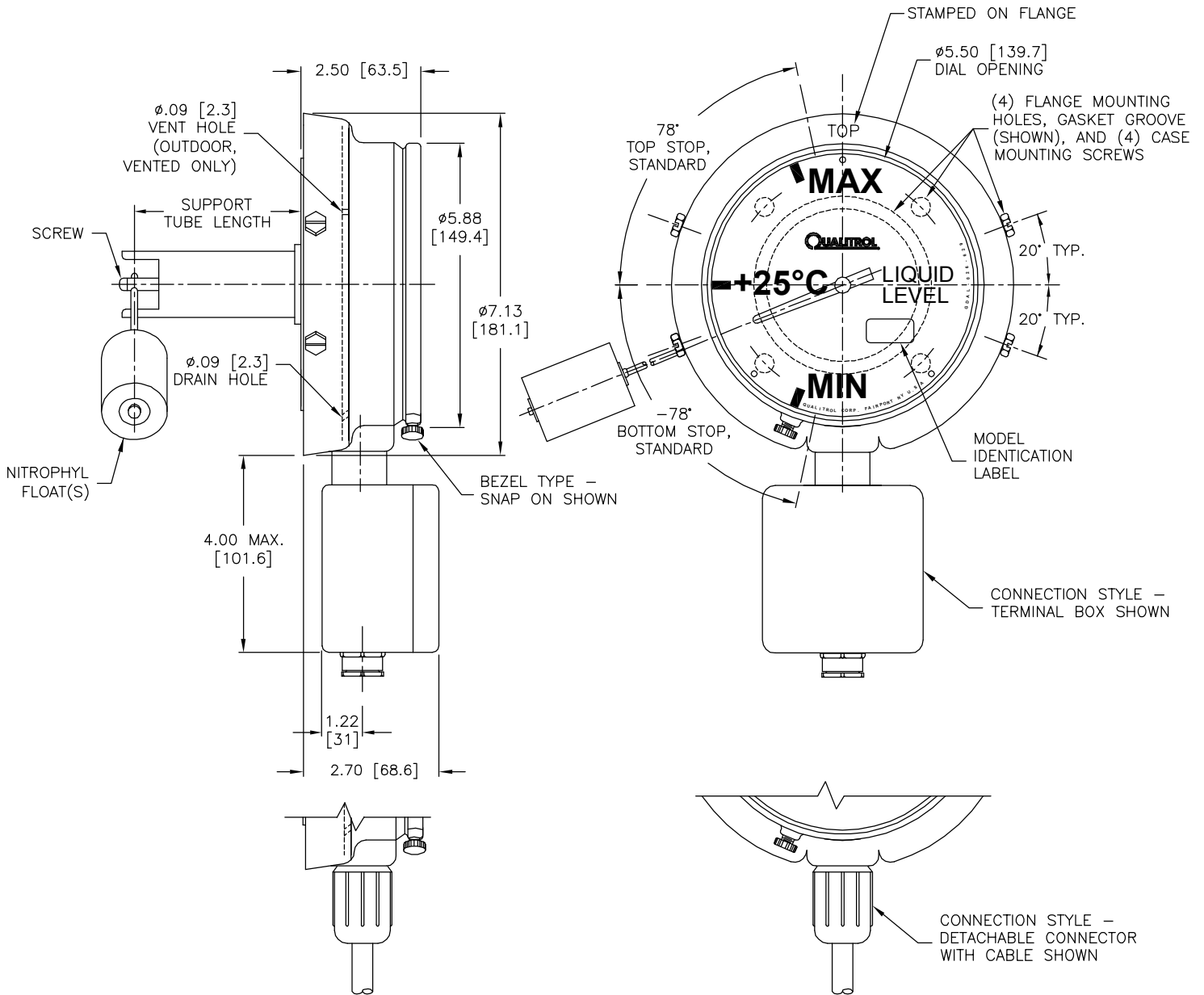


Product Information
6" Lever Drive Liquid Level Gauge
General

© Qualitrol is an ISO 9001 system certified company.
 Information subject to change without notice.



NOTES: (UNLESS OTHERWISE SPECIFIED)

1. DIMENSIONS ARE FOR REFERENCE AND SHOWN IN INCHES [MILLIMETERS].
2. SUPPORT TUBE LENGTH, BEZEL, CONNECTION, AND FLANGE MOUNTING OPTIONS ARE SPECIFIED ON ORDER.
3. STANDARD FINISH: ASA #70 LT GRAY.
4. CASE: ALUMINUM
5. BEZEL: STAINLESS STEEL
6. SUPPORT TUBE: BRASS
7. FLANGE: ALUMINUM
8. FLOAT ROD MUST BE ASSEMBLED TO EXTEND FROM COUNTERBORDED SIDE OF SHAFT.
9. INSULATION TEST: 2000 VOLTS TO GROUND FOR 60 SECONDS.
10. SWITCH RATING:
 - 10A @ 125, 250, 480 VAC
 - 1/2A @ 125 VDC - NON INDUCTIVE
 - 1/4A @ 250 VDC - NON INDUCTIVE

Product Information

6" Lever Drive Liquid Level Gauge

Option Sheet Part 1 of 2

© Qualitrol is an ISO 9001 system certified company.
Information subject to change without notice.



Specify

<input type="checkbox"/> Case Assembly only
<input type="checkbox"/> Flange Assembly only
<input type="checkbox"/> Float Rod only
<input type="checkbox"/> LLG complete

Environment Conditions

<input type="checkbox"/> Outdoor, Vented (NEMA 3R, std.)
<input type="checkbox"/> Outdoor, Sealed (IP65)
<input type="checkbox"/> Tropical, High Humidity (IP65)

Dial Text

(refer to dial styles)

<input type="checkbox"/> MAXMIN25 (Max, Min, and 25°C)
<input type="checkbox"/> MAXMIN20 (Max, Min, and 20°C)
<input type="checkbox"/> HILO25 (High, Lo, and 25°C)
<input type="checkbox"/> ALBA25 (Alto, Bajo, and 25°C)
<input type="checkbox"/> CUSTOM (consult factory)
<input type="checkbox"/> CUSTOM/T (Top Reading consult factory)

Dial Color

<input type="checkbox"/> White Characters / Black Background
<input type="checkbox"/> Yellow Characters / Black Background

Switch Rating

<input type="checkbox"/> STD	10 Amp @ 125/250 VAC w/ 2K Hi-Pot
<input type="checkbox"/> GOLD	0.10 Amp @ 125 VAC w/ 2K Hi-Pot

Switch Settings

Specify settings at either Dimension 'A', 'B', 'C', or 'D' (see note 3, refer to option sheet part 2)

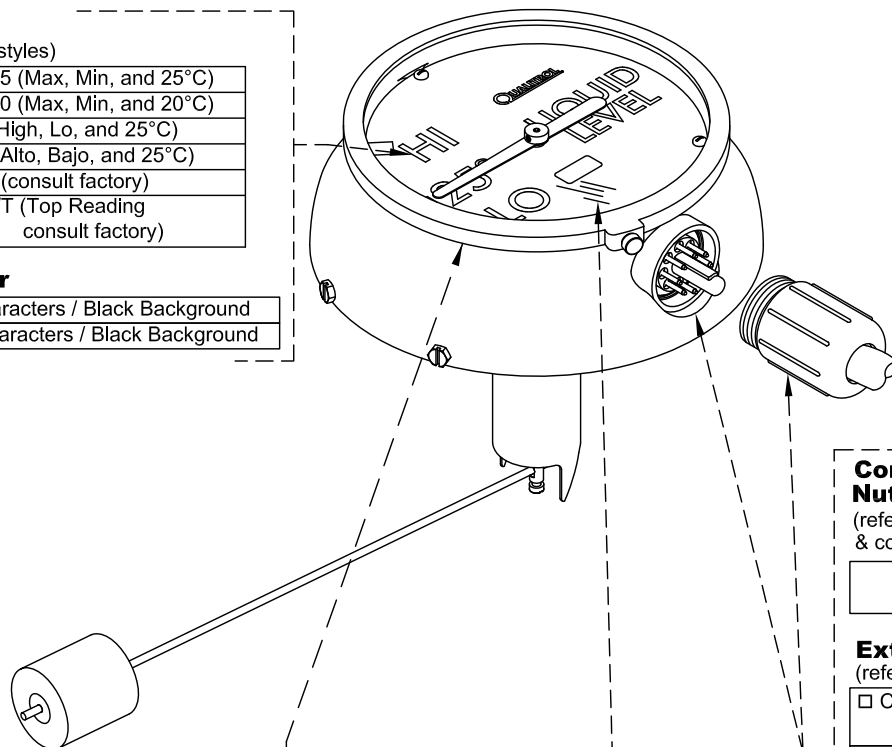
Number of Switches	Switch #1	Switch #2
<input type="checkbox"/> None		
<input type="checkbox"/> 1		
<input type="checkbox"/> 2		

If switch #1 setting = switch #2 setting, then →

Switch Sequence

First switch operates min. 5 dial degree prior to grad

<input type="checkbox"/> Switch #1 before Switch #2 (min. 5 dial degrees separation)
<input type="checkbox"/> Switch #2 before Switch #1 (min. 5 dial degrees separation)
<input type="checkbox"/> None (max. 5 dial degrees separation)



Connection Styles

(refer to device wiring & connector styles)

<input type="checkbox"/> Qualitrol (detachable)
<input type="checkbox"/> ANSI (detachable)
<input type="checkbox"/> Perm. Attached
<input type="checkbox"/> Terminal Box (requires Outdoor, Vented and 6 o'clock connector orientation)
<input type="checkbox"/> Military

Connector Nut Style

(refer to device wiring & connector styles)

--

Device Wiring

(refer to device wiring & connector styles)

--	--	--	--

External Wiring

(refer to device wiring & connector styles)

<input type="checkbox"/> Cable	<input type="checkbox"/> 16 Ga. SOW-A/SO (Std.)
	<input type="checkbox"/> Other (consult factory)
<input type="checkbox"/> Flying Leads	<input type="checkbox"/> 16 Ga. TEW (Std.)
	<input type="checkbox"/> 16 Ga. TEF
	<input type="checkbox"/> 14 Ga. TEW
<input type="checkbox"/> None	
<input type="checkbox"/> Connector Parts Only	

Length of Cable or Flying Leads

<input type="checkbox"/> Inches	<input type="checkbox"/> Meters
Specify 6" increments	Can be specified to 0.1 m
Length	

Connector Orientation

<input type="checkbox"/> At 3 o'clock (requires Outdoor, Sealed)
<input type="checkbox"/> At 6 o'clock (std.)

Note: Case mounting holes remain at 3 o'clock regardless of connector orientation.

NOTES: (UNLESS OTHERWISE SPECIFIED)

- DIMENSIONS ARE FOR REFERENCE AND SHOWN IN INCHES [MILLIMETERS].
- SWITCH REMAINS ACTUATED FOR APPROXIMATELY 90 DIAL DEGREES AFTER OPERATING.
- SWITCHES OPERATE ON FALLING LEVEL FOR B, C, AND D AND ON RISING LEVEL FOR A.

Bezel Type

<input type="checkbox"/> Permanent (std.)
<input type="checkbox"/> Removable (requires Indoor/Outdoor)
<input type="checkbox"/> Snap-On w/ Test Feature (requires Indoor/Outdoor)

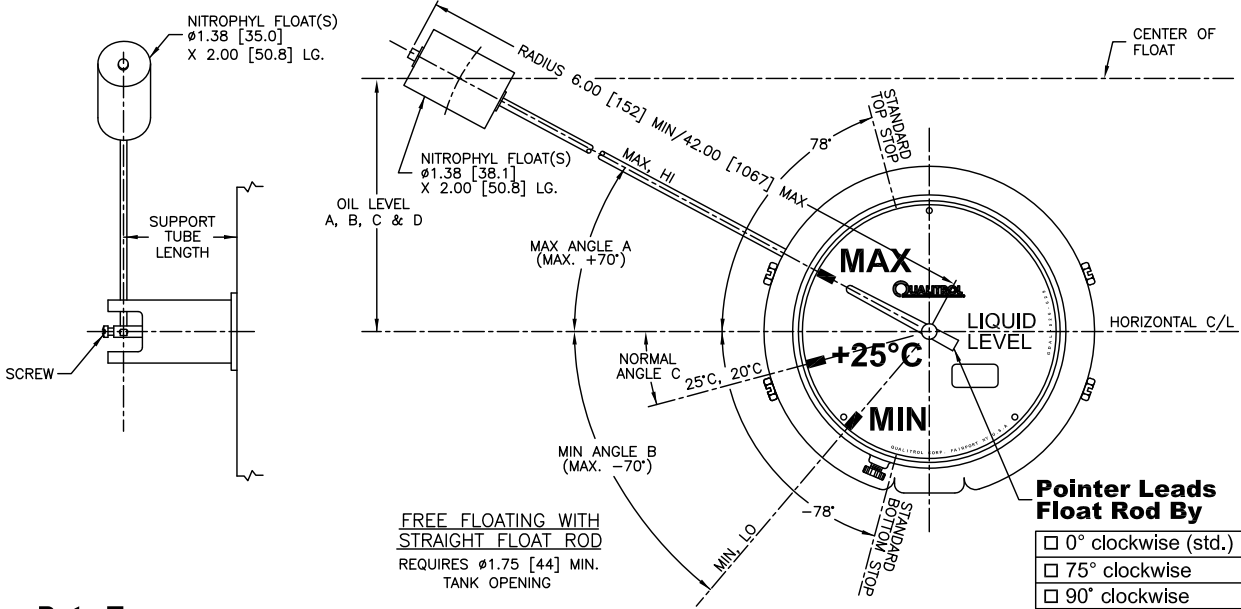
Lens Material

<input type="checkbox"/> Tempered Glass
<input type="checkbox"/> Polycarbonate
<input type="checkbox"/> Polycarbonate

Product Information

6" Lever Drive Liquid Level Gauge Option Sheet Part 2 of 2

© Qualitrol is an ISO 9001 system certified company.
Information subject to change without notice.



Data Type

- Angles
Given from Horizontal Center Line
- Oil Levels
Given from Horizontal Center Line (Same Units as Radius)

Radius

- Inches
Specify .05" increments
 - Millimeters
Specify 1 mm increments
- Length =

Note: If radius is specified in mm, then float rod screw will be metric

Data Input

*use minus sign (-) for angles or oil levels below horizontal c/l and plus sign (+) for angles or oil levels above horizontal c/l

Max Angle/Level (required)	*A =
Min Angle/Level (required)	*B =
20°C/25°C Angle/Level (required except when ordering flange assembly only)	*C =
Optional Grad Angle/Level (D must be between C & B (optional 4th graduation mark))	*D =

Notes: Total travel (A - B) must be minimum 80° and maximum 140°.

Maintain minimum angular separation of 10° between A, B, C and D.

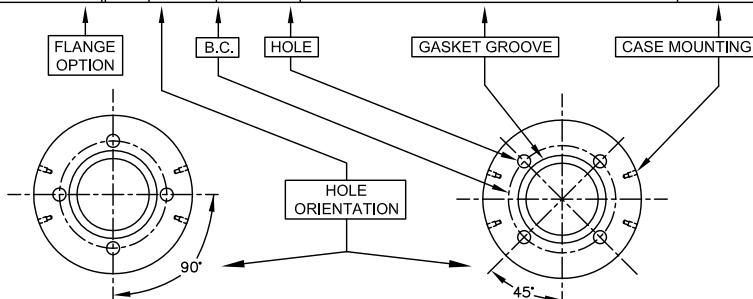
Lever Drive Flange Mounting Styles (in inches unless otherwise noted)

<input type="checkbox"/> 45E31	45°	3.125	$\phi .28$	2.75 O.D. x 2.13 I.D. x .13 x .06 DP.	#10-32
<input type="checkbox"/> 45E32	45°	3.125	$\phi .34$	2.75 O.D. x 2.13 I.D. x .06 DP.	#10-32
<input type="checkbox"/> 45E33	45°	3.125	$\phi .34$	2.75 O.D. x 2.13 I.D. x .13 x .06 DP.	#10-32
<input type="checkbox"/> 45E34	45°	3.125	$\phi .34$	2.63 O.D. x 1.75 I.D. x .08 DP.	#10-32
<input type="checkbox"/> 45E41	45°	4.000	$\phi .44$	3.38 O.D. x 2.63 I.D. x .06 DP.	#10-32
<input type="checkbox"/> 45E42	45°	4.000	$\phi .44$	N/A	#10-32
<input type="checkbox"/> 45E43	45°	4.000	$\phi .44$	3.38 O.D. x 2.63 I.D. x .13 x .09 DP.	#10-32
<input type="checkbox"/> 45E44	45°	4.000	$\phi .44$	3.38 O.D. x 2.63 I.D. x .09 DP.	#10-32
<input type="checkbox"/> 45E45	45°	4.750	$\phi .56$	4.00 O.D. x 3.12 I.D. x .12 DP.	#10-32
<input type="checkbox"/> 45E51	45°	5.000	$\phi .34$	3.81 O.D. x 3.31 I.D. x .13 DP.	#10-32
<input type="checkbox"/> 90E31	90°	3.125	$\phi .34$	2.75 O.D. x 2.13 I.D. x .06 DP.	#10-32
<input type="checkbox"/> 90E32	90°	3.125	$\phi .28$	2.75 O.D. x 2.13 I.D. x .06 DP.	#10-32
<input type="checkbox"/> 90E33	90°	3.125	$\phi .28$	N/A	#10-32
<input type="checkbox"/> 90E34	90°	3.125	$\phi .34$	2.75 O.D. x 2.13 I.D. x .13 x .06 DP.	#10-32
<input type="checkbox"/> 90E35	90°	3.125	$\phi .34$	2.63 O.D. x 1.75 I.D. x .08 DP.	#10-32
<input type="checkbox"/> 45M41	45°	4.000	$\phi 13\text{MM}$	N/A	M5
<input type="checkbox"/> 45M42	45°	4.000	$\phi 7\text{MM}$	87MM O.D. x 72.4MM I.D. x 4.3MM DP.	M5

Support Tube Length (inches/mm)

- 2.17 / 55MM
- 3.00 / 76MM
- 3.15 / 80MM
- 3.94 / 100MM
- 5.91 / 150MM
- 7.87 / 200MM

Note: For custom top reading dials, select 3.00/76MM support tube only



NOTES: (UNLESS OTHERWISE SPECIFIED)

1. DIMENSIONS ARE FOR REFERENCE AND SHOWN IN INCHES [MILLIMETERS].
2. ALL ANGULAR DEGREE REFLECT FLOAT ROD TRAVEL.

Product Information

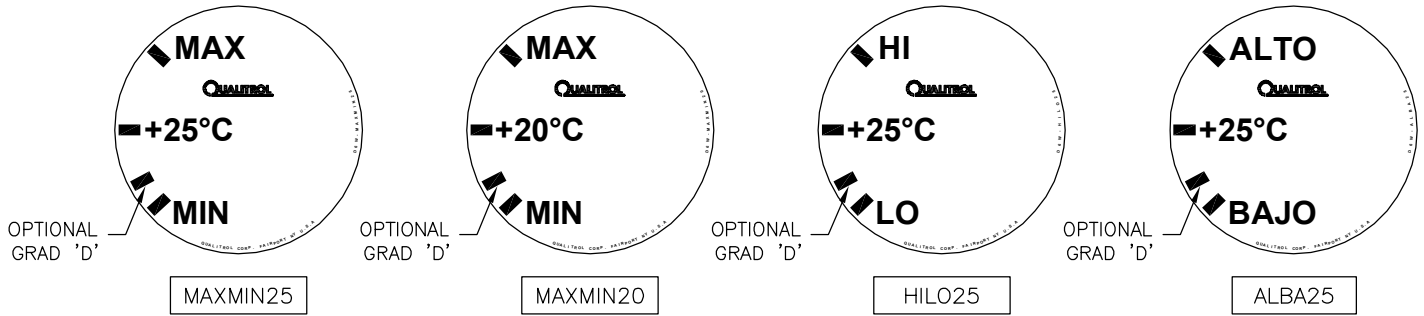
6" Lever Drive Liquid Level Gauge

Dial Styles, Device Wiring & Connector Styles

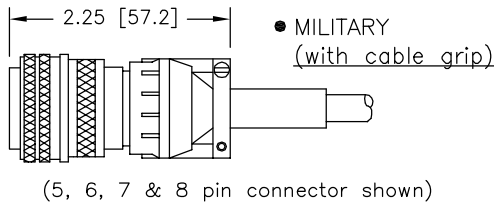
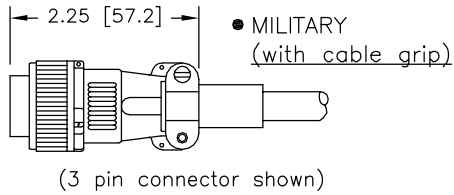
© Qualitrol is an ISO 9001 system certified company.
Information subject to change without notice.



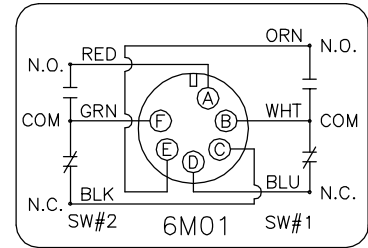
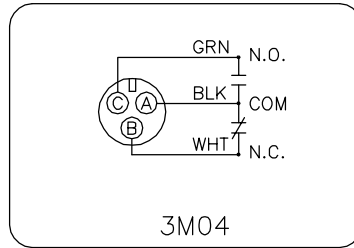
DIAL STYLES



CONNECTOR NUT STYLES AND DEVICE WIRING FOR MILITARY DETACHABLE CONNECTORS



MILITARY



Product Information

6" Lever Drive Liquid Level Gauge

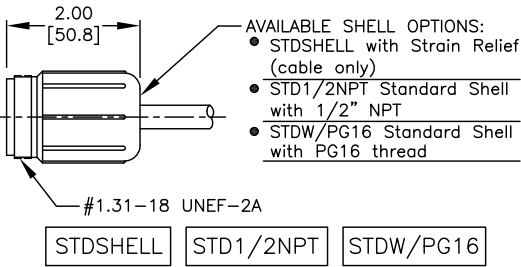
Device Wiring & Connector Styles

© Qualitrol is an ISO 9001 system certified company.
Information subject to change without notice.

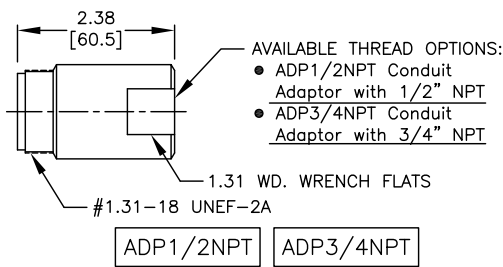


CONNECTOR NUT STYLES AND DEVICE WIRING FOR QUALITROL AND ANSI DETACHABLE CONNECTORS

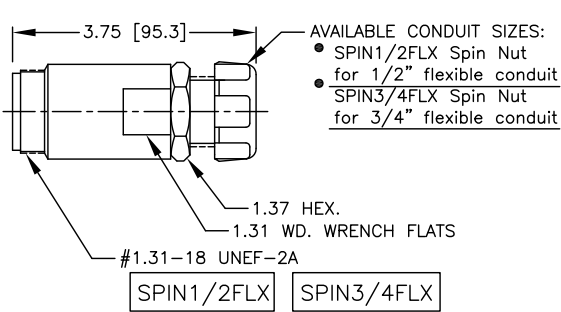
STANDARD NUT



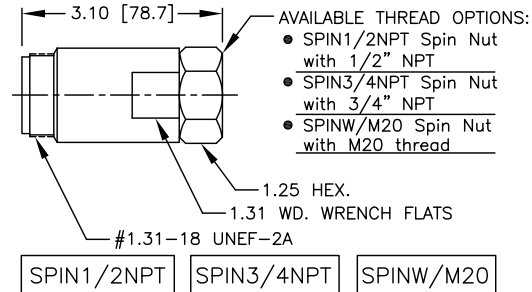
CONDUIT ADAPTOR



SPIN NUT (FLEX CONDUIT ADAPTOR)



SPIN NUT (CONDUIT ADAPTOR)

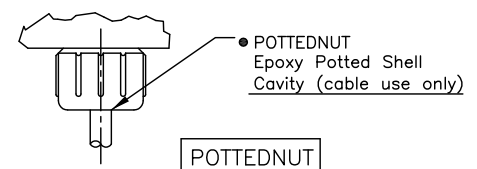


NOTES: (UNLESS OTHERWISE SPECIFIED)
1. DIMENSIONS ARE FOR REFERENCE AND SHOWN IN INCHES [MILLIMETERS].

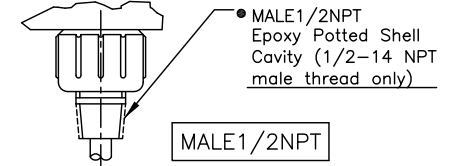
ALL WIRING SHOWN AS VIEWED FROM OUTSIDE OF ENCLOSURE. ALL SWITCH FUNCTIONS SHOWN IN NON-ALARM STATE.
STD. CABLE IS 16 GA. TYPE SOW-A/SO. STD. FLYING LEADS ARE 16 GA. TYPE TEW.

CONNECTOR NUT STYLES AND DEVICE WIRING FOR PERMANENTLY ATTACHED CABLES AND WIRES

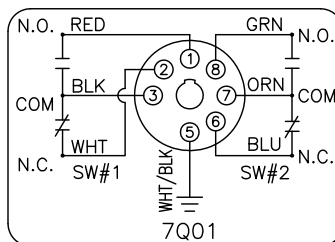
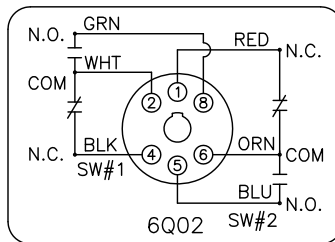
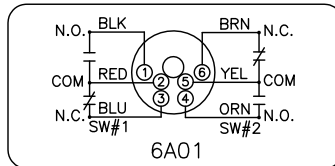
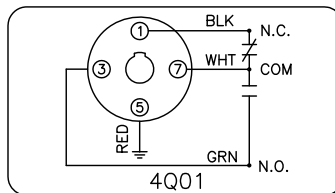
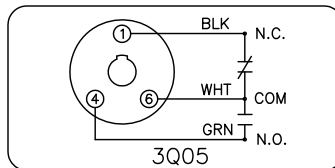
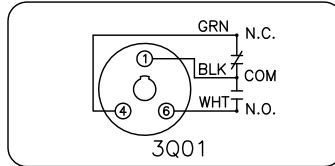
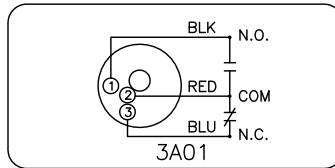
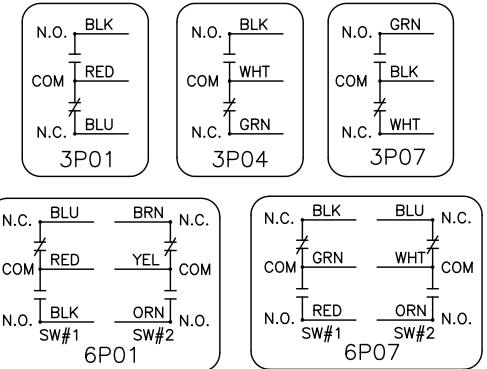
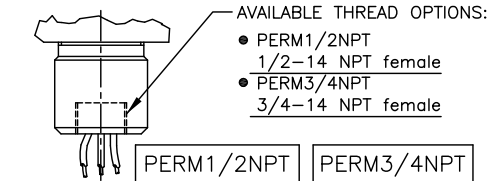
POTTED CABLE CONNECTION



MALE CONDUIT CONNECTION



FEMALE CONDUIT CONNECTION



DEVICE WIRING FOR TERMINAL BOX

TERMINAL BOX: 1 & 2 SWITCH W/ GROUND (2 SWITCH VERSION SHOWN)

